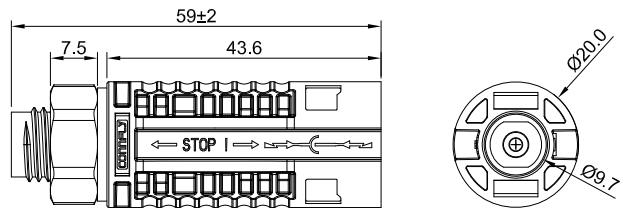
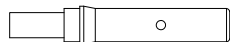


The information provided herein is from CONNELY Electronic Co., Ltd. and is confidential. Any disclosure to a party other than the recipient is prohibited. The intellectual properties and its rights contained herein, including but not limited to, trademarks, patents, copyrights, trade secrets, and technical know-how, are owned exclusively by CONNELY or its affiliates. Unauthorized use of this information may result in legal action. CONNELY may enforce its intellectual property rights at its own discretion; failures or delays to exercise such rights does not constitute a waiver of such rights.

Male

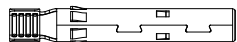
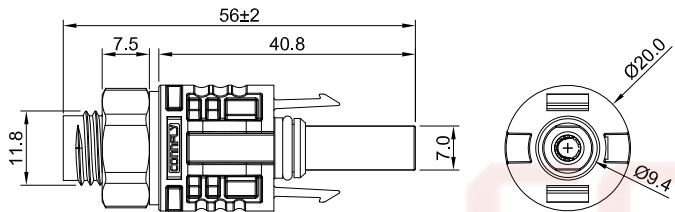


Stamping Pin

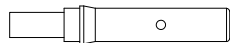


Machine Pin

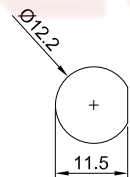
Female



Stamping Pin



Machine Pin



Suggested Panel Opening



(Series Image-Reference Only)

| REV. | DESCRIPTION | DRAWN         | CHECKED | APPROVED |
|------|-------------|---------------|---------|----------|
| A    | NEW RELEASE | WPY 12/04/25' |         |          |
|      |             |               |         |          |
|      |             |               |         |          |
|      |             |               |         |          |

#### Notes:

##### Specifications:

1. Contact Resistance: 0.5mΩ Max.
2. Insulation Resistance: 1000MΩ Min.
3. Dielectric Withstanding Voltage: 8000V AC(rms) For 1 Minute.
4. Current Rating: 30A or 50A.
5. Voltage Rating: 1500V DC rms.
6. Temperature: -40°C~+85°C.
7. Cable size: 4~6mm².
8. Waterproof rated: IP67.

##### Materials:

1. Insulating material: Thermoplastic,UL 94 V-0.
2. Contact: Red Copper,Tin plated.
3. Fingers: Beryllium Copper, Tin Plated.
4. Clip: Stainless Steel.
5. Sealing: Silicone rubber,Black.

##### Product Number Code:

DS1185-06 - X X X X X X

##### Current Type

- A: 30A(Stamping Pin)  
B: 50A(Machine Pin)

##### Packing Type

- 1: Mix packing(Female+Male/Bag)  
2: Separation packing(Female/Bag or Male/Bag)  
Q:N\*Female/Bag+N\*Male/Bag+N\*Male Contact/Bag  
+Female Contact/Bag

##### Housing color

B: Black

##### Contact plating



6: Tin

##### Mounting type

V: Panel type

##### Connector type

F: Female M: Male  
A: Female+Male

| GENERAL TOLERANCE |       | ANGLE TOLERANCE     |       | PROJECTION   |  | TITLE  | Solar Connectors Panel Type<br>1500V–Tool disassembly |  |        |
|-------------------|-------|---------------------|-------|--|---|--------|---|--|--------|
| X.                | ±0.60 | X.                  | ±5°   | UNITS  | mm  |        |   |  |        |
| .X                | ±0.38 | .X                  | ±3°   | SHEET SIZE   | A4  | SERIES | DS1185–06 SERIES                                      |  |        |
| .XX               | ±0.25 | .XX                 | ±2°   |  |   |        |   |  |        |
| DRAWING TYPE      |       | CUSTOMER            |       | <div> 晨翔电子有限公司<br/>CONNFLY CONNFLY ELECTRONIC CO. LTD</div> |   |        |   |  |        |
| SCALE             |       | 1:1                 | SHEET |  |   |        |   |  | 1 OF 1 |
| DRAWING NO.       |       | C–DS1185–06–XXXXX–A |       |  |   |        |   |  |        |



晨翔电子有限公司  
CONNFLY CONNELY ELECTRONIC CO. LTD